

# ISEAL System Overview

Version 1 December 2022



ISEAL Community Member System Overview	
Organisation Name	Bonsucro
Year	2022
Version	1
1) The <b>STRATEGIES</b> our system employs to meet its sustainability objectives	
<p>Bonsucro’s purpose is to accelerate the sustainable production and uses of the largest agricultural commodity in the world – sugarcane. Bonsucro’s vision is a sugarcane sector with thriving, sustainable producer communities and resilient, assured supply chains.</p> <p>Bonsucro’s key Purpose, Aims, Objectives, Principles and Activities are detailed in the <a href="#">Bonsucro Strategic Plan 2021-2026</a> and illustrated in our <a href="#">Theory of Change</a>.</p> <p>Strategies to achieve our sustainability objectives include:</p> <ul style="list-style-type: none"> <li>• <b>Certification &amp; Assurance</b> – the Bonsucro Standards are at the heart of everything Bonsucro does.</li> <li>• <b>Impact Projects</b> – the Bonsucro Impact Fund invests in initiatives and projects that catalyse or accelerate sustainable sugarcane production.</li> <li>• <b>Membership Development</b> – engaging and representing a wide range of sugarcane interests to motivate continuous improvement on sustainability throughout the supply chain.</li> <li>• <b>Market Development</b> - stimulate and facilitate demand and uptake for Bonsucro-certified products, in both traditional and developing end-use markets. This includes the Bonsucro Credit Trading Platform</li> <li>• <b>Digitalisation &amp; Data</b> - drive operational efficiencies and unlock significant value for stakeholders from data analysis and insights.</li> <li>• <b>Communications &amp; Influencing</b> - communicate with credibility and integrity, tailored to the needs of different audiences, promoting engagement and action among stakeholders including policy makers.</li> </ul> <p>More details are available in section 7 of our <a href="#">Strategic Plan</a>.</p>	

## 2) A description of the **STANDARDS** that our system has developed

There are two types of Bonsucro certification – one on the production end of the supply chain and one on the trading side of the supply chain. The two work together to ensure that sugarcane production benefits producer communities, ensures people are treated fairly and creates long-lasting, traceable supply chains.

### **Bonsucro Production Standard**

The Production Standard helps farmers and mills to measure their productivity alongside key environmental and social impacts. It can be used by all sugarcane mills and farms to demonstrate sustainable production, regardless of size. It is a metric-based standard supported by the Bonsucro Calculator tool (see section 6). The latest version of the standard, being rolled out from 2022, is version 5.1.

Businesses that use the Bonsucro Production Standard:

- Increase efficiency
- Lower energy use
- Decrease water use
- Reduce waste
- Create a safe working environment
- Lower energy use
- Increase market viability

More information: <https://bonsucro.com/production-standard/>

### **Bonsucro Chain of Custody Standard**

The Chain of Custody Standard enables brands to trace sugarcane from the origin to the end product. It allows brands to make sustainability claims about their sugarcane sourcing. The Chain of Custody Standard relates to the supply of a product including all stages, from the feedstock production to consumption.

It demonstrates:

- Responsible sourcing
- Ethical trading
- Assurance of compliance
- Increased supply chain visibility

More information: <https://bonsucro.com/chain-custody-standard/>

### **Additional options**

Businesses can also choose to opt for additional options:

- **Bonsucro Production Standard for Smallholder Farmers**  
This adaptation of the Bonsucro Production Standard aims at facilitating the collection of data on a much smaller scale meaning the cost for implementation is lower and is therefore more inclusive.  
More information: <https://bonsucro.com/production-standard-for-smallholder-farmers/>
- **Bonsucro EU-RED Standard**  
Voluntary add-on to the Bonsucro Standards, enabling operators to comply with the EU Renewable Energy Directive 2018/2001/EC to trade biofuels, bioliquids and biomass fuels in the European Union.  
More information: <https://bonsucro.com/bonsucro-eu-red-ii-transition/>

For more information on our standard development and revision process:

<https://bonsucro.com/production-standard/standards-development/>

Download Bonsucro standard and tools: <https://bonsucro.com/certification-tools/>

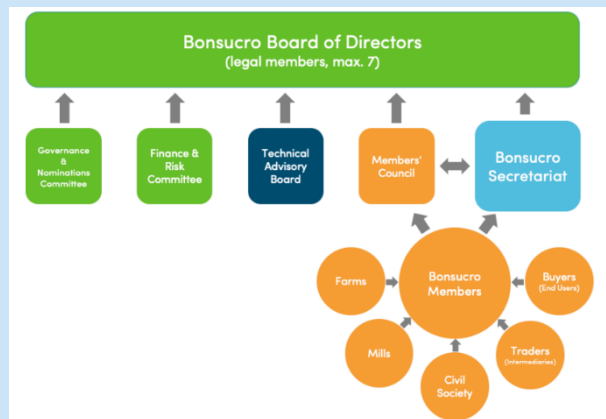
## 3) How we maintain **RESPONSIBILITY** for decisions taken about and by our system

Bonsucro has put in place a robust [governance](#) structure alongside strong procedures to ensure that Bonsucro is in the best position to work towards its purpose.

### **Governance Bodies**

[Board of Directors and sub-committees](#) - The Board is ultimately responsible for all actions and activity of Bonsucro, although for practical purposes it delegates day-to-day responsibility of managing the organisation to the CEO and Secretariat team.

**Members Council** - The Members' Council has been created as the representative body for Bonsucro members. The MC comprises up to 25 members, 15 of which are elected from the 5 membership classes (3 from each), and up to 10 that are co-opted by the MC itself so as to ensure a balanced membership from amongst a range of sectors, interests and geographies involved with sugar cane. The Chair and Vice Chair of the MC both also sit on the Board of Directors and so can ensure a cross flow of information and views between the bodies.



**Technical Advisory Board** - The TAB has been created as the body that provides the Board of Directors with advice and recommendations regarding the Bonsucro Standards, assurance mechanisms, and measurement of impact. It comprises up to 15 individuals, each of whom brings a specific skill set to the TAB covering industrial productivity, farm productivity, supply chain, social impact and environmental impact, and also strive to include someone from a 'peer' standards organisation.

### Bonsucro Secretariat and Staff

The Secretariat are responsible for facilitating consultation with Bonsucro's stakeholders, making recommendations to the relevant governing bodies, and carrying out decisions made about the system.

## 4) How our system's design demonstrates a **COMMITMENT TO IMPROVEMENT**

Bonsucro is dedicated to continuous improvement and encourages this both in our own work and among Bonsucro members.

**Monitoring, Evaluation and Learning (MEL)** – MEL is integral to the work of Bonsucro, and the [Bonsucro MEL Framework](#) enables us to:

- > Monitor and evaluate the multiple roles of Bonsucro in contributing to change, as well as to learn how delivery of the strategy can be continuously improved;
- > Generate evidence of our impact and enable us, as a community of change, to learn and improve (informing service delivery, programme design and tools, globally and locally);
- > Report and celebrate success by giving visibility to positive impacts, creating trust in Bonsucro and inspiring our stakeholders to take action on sustainability.

**Code of Conduct** - Bonsucro's [Code of Conduct](#) is the foundation of members' agreement with Bonsucro to be part of the platform. It is a key mechanism by which Bonsucro drives commitment to the principles of continuous improvement and respect for human rights in sugarcane supply chains. All members act to embed this commitment into their operations and business relationships, and communicate their progress to stakeholders.

**Certification** – our metric-based [Production Standard](#) and the [Bonsucro Calculator](#) are designed to give clear results to users about their level of compliance with the standard and their performance against the metric thresholds of each indicator. This provides a practical framework for continuous improvement both among producers and for Bonsucro as a whole.

## 5) How our standard or tool is monitored and reviewed to ensure its **RELEVANCE**

The Bonsucro Standards and Assurance function **monitors implementation of the Bonsucro Standards:**

- Ongoing feedback from Bonsucro members and service partners
- Audit reports review
- Bonsucro calculator data analysis
- Certification Bodies calibration sessions
- Online Q&A sessions with members and partners
- Regional team meetings with mills and stakeholders
- Complaints and allegations management

Information collected enables Bonsucro to release interpretation notes and additional guidance, inform auditors calibration sessions and members capacity building programmes, and feeds into more in depth revisions of the standard.

Bonsucro standards are revised every 4 to 5 years, in line with the **ISEAL Standards Setting Code**

More information: <https://www.isealalliance.org/community-members/bonsucro>

Bonsucro ensures all Bonsucro Standards are and remain effective and credible by incorporating the values of transparency, participation and fairness into the processes for their development, and through compliance with international best practice for standards development.

For more information on our stakeholder consultation, standard development and revision process:

<https://bonsucro.com/production-standard/standards-development/>

The Bonsucro [Monitoring, Evaluation and Learning \(MEL\) System](#) also helps to track the effectiveness of the standards in practice over time. Outcome monitoring allows for assessment of the standard's wider impact. MEL processes such as the Members Annual Report provide a structure to gather feedback from Members about their experience engaging with the standards. This offers valuable insights on ways that the standards themselves are working and their relevance in changing contexts. For example, the stepwise approach described in section 6.4 of the [Bonsucro Strategic Plan](#) is intended to make Bonsucro's standards and tools more relevant and accessible to different parts of the sugarcane sector.

## 6) How the standard or tool is **IMPLEMENTED**

Sugarcane operators engage with Bonsucro by first **becoming members of the Bonsucro platform**. This involves a due diligence process based on the [Bonsucro Code of Conduct](#), which reflects the main principles of the Bonsucro Production Standard.

More information: <https://bonsucro.com/join-the-network-2/>

Bonsucro offers direct and indirect **training and capacity building opportunities** to its members to support their implementation of the applicable standards. The Bonsucro regional teams provide support to members in engaging with the standards. Members can also request a gap assessment to optimise the implementation of the standards before their initial certification audit.

More information: <https://bonsucro.com/bonsucro-training/>

Bonsucro has developed a **series of guidance documents** to support the standards implementation and verification: <https://bonsucro.com/certification-tools/> This includes detailed guidance documents and templates regarding High Conservation Value (HCV) (supply base mapping, biodiversity management plan development, guidance on expansion of cultivation).

Members contract a [licensed certification body](#) to carry out their **initial certification audit** and subsequent surveillance audits. Following each audit, non-conformities requires the definition and implementation of corrective actions plans to fulfil the **continuous improvement agenda** of the Bonsucro standards.

When implementing the Bonsucro Production Standard (and its smallholder farmers adaptation), members benefit from a unique tool developed by Bonsucro: the **Bonsucro Calculator**. The Bonsucro Production Standard is a metric standard which requires the sugarcane farmer / mill to collect data points to monitor performance and demonstrate compliance. This information is collected via the [Bonsucro Calculator](#) every year and verified at audit. The data analysis provides valuable insights of progress and performance across sugarcane producing regions (see section 5).