

# Global Living Wage Series

## Malawi



### Assumptions

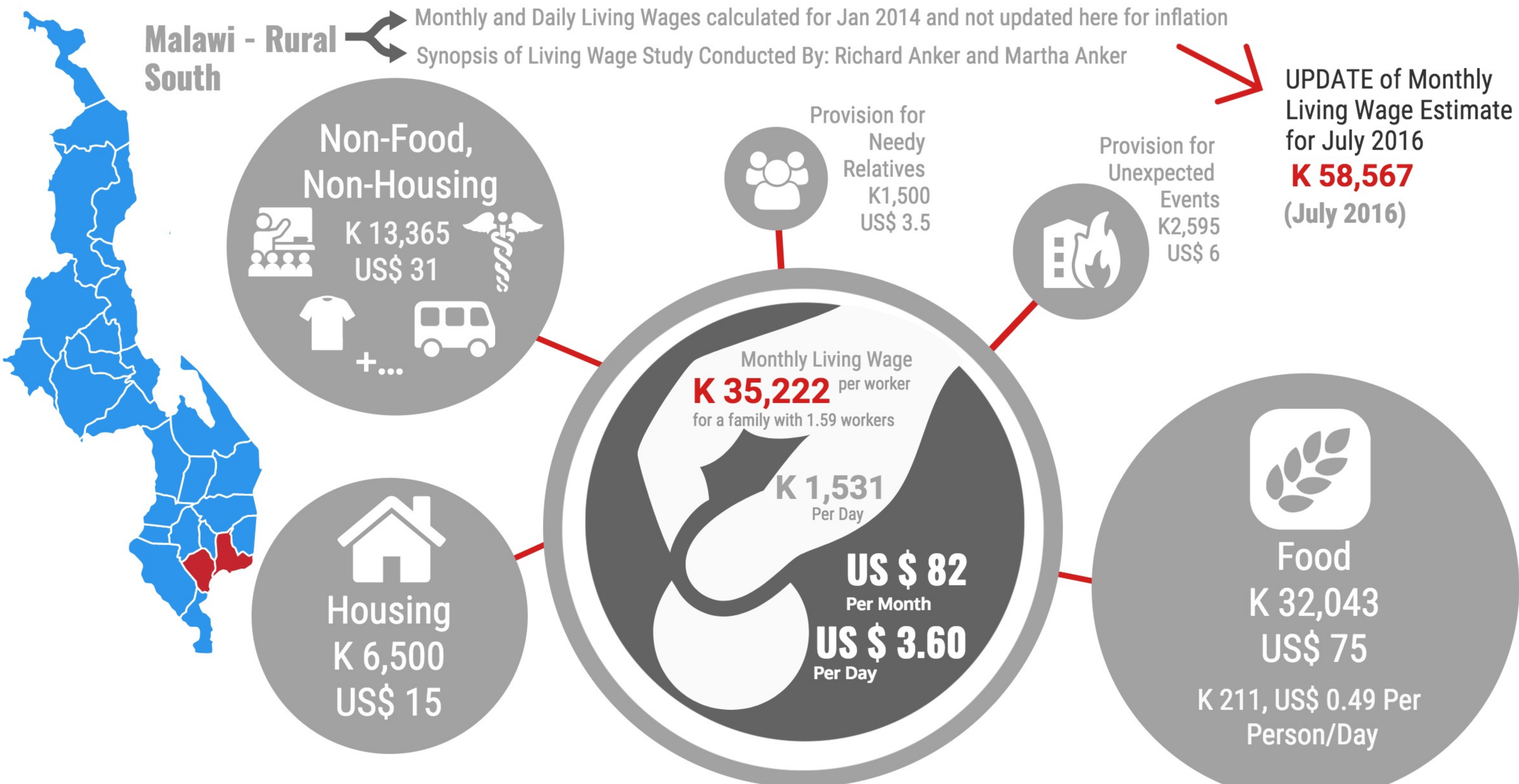
 Family Size 5 | 2 Adults, 3 Children | 1.59 Workers Per Family

Photo Courtesy of Fairtrade International

### Malawi - Rural South

Monthly and Daily Living Wages calculated for Jan 2014 and not updated here for inflation  
Synopsis of Living Wage Study Conducted By: Richard Anker and Martha Anker

UPDATE of Monthly Living Wage Estimate for July 2016  
**K 58,567**  
(July 2016)



### Local Housing Standard for Family

- cement floor
- brick walls
- durable roof of zinc or cement without leaks
- ceiling at least 2 meters at lowest point
- sufficient number of windows for adequate lighting and ventilation
- potable drinking water in relatively close proximity to house
- pit latrine in good condition in close proximity to house
- 3 rooms (living room, 2 bedrooms)
- around 30 square meters of floor space
- building in reasonable condition

### Model Diet Grams Per Person Per Day

- 450g maize (includes grinding charge)
- 40g beans (20g cow pea, 20g pigeon pea)
- 60g cassava (least expensive root/tuber)
- 12g dried or smoked small fish (2 fish meals per week)
- 27g powdered milk (1 cup for children 2-5 and pregnant women)
- 63g fruit (banana)
- 189g vegetables (126g green leafy vegetables, 63g eggplant)
- 24g brown sugar (6 tsp)
- 24g cooking oil (2 tbsp)
- 3 cups tea for adults

# Global Living Wage Series

## Malawi Rural South



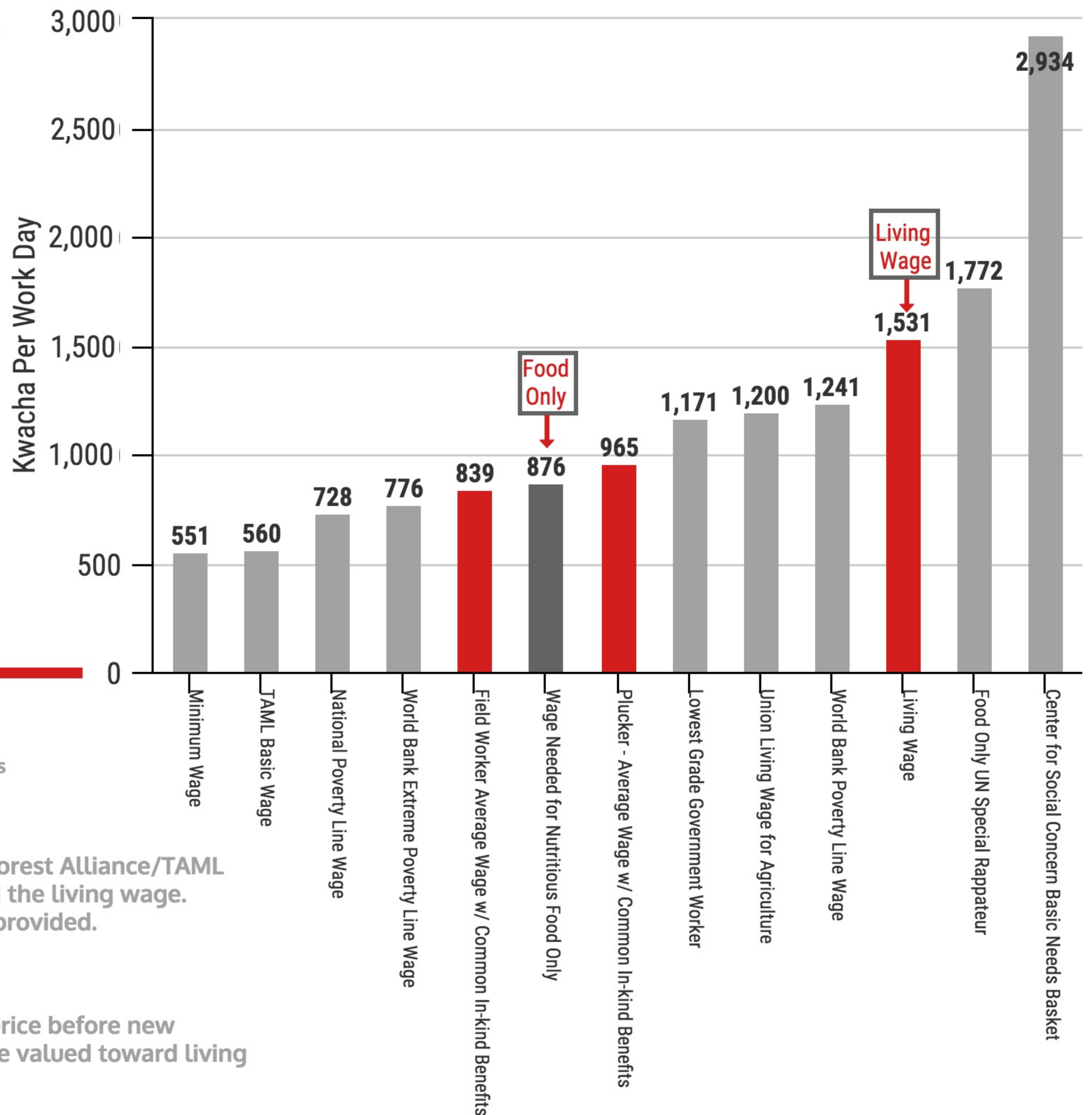
### Context Provided for Tea Wages

#### Wage Ladder for Malawi in Kwacha

#### Common In-kind Benefits

Per Worker Values

- Meals**  
K 1,625/ Month, US \$3.80
- Health Care**  
K 700/ Month, US \$1.60
- Creche and School Maintenance**  
K 2,000/ Year, US \$4.60
- Recreation (futbol team)**  
K 4,200/ Year, US \$9.80
- Burial Expenses for workers' deaths**  
K 2,200/ Year, US \$5.00



#### Uncommon In-kind Benefits

Per Worker Values

- Housing**  
K 4,500/ Month, US \$10.50  
Most estate housing does not meet Rainforest Alliance/TAML standard and so cannot be valued toward the living wage. Acceptable housing can be valued when provided.
- Maize**  
K 5,300/ Year, US \$12.30  
Minority of estates sell maize at reduced price before new harvest when maize prices increase. Can be valued toward living wage when provided.

[www.globallivingwage.org](http://www.globallivingwage.org)

Register for Regular Benchmark Updates from the GLWC at <http://eepurl.com/b6Jlyf>

With thanks for field support from Ethical Tea Partnership and Oxfam

Made Possible by the Generous Support of:

# GLOBAL LIVING WAGE COALITION

The Global Living Wage Coalition Members: Fairtrade International, Forest Stewardship Council, Goodweave International, Rainforest Alliance, Social Accountability International, Sustainable Agriculture Network, and UTZ In Partnership with the ISEAL Alliance and Richard Anker and Martha Anker

